



香港防癌會賽馬會癌症康復中心
The Hong Kong Anti-Cancer Society
Jockey Club Cancer Rehabilitation Centre



以外之家
Home Away From Home



香港防癌會
HONG KONG ANTI-CANCER SOCIETY
Since 1963

SF2023061000

香港防癌會賽馬會癌症康復中心是以自負盈虧形式運作的護養院。中心致力為需要全面照顧的病人，包括癌症患者、長者及長期病患者，提供長期護理、復康護理、紓緩護理及暫托照顧。中心有駐院醫生診症、並設有物理治療、藥房服務、中醫診症及治療、康樂活動等，務求全面照顧病人的「身、心、社、靈」需要。

The Hong Kong Anti-Cancer Society Jockey Club Cancer Rehabilitation Centre ('JCCRC') is a nursing home on a self-financing but non-profit making basis. JCCRC provides long-term care, rehabilitation, palliative care and respite care for patients in need of comprehensive care, including cancer patients, the elderly and chronically ill patients. JCCRC offers resident doctor's consultations, physiotherapy, pharmacy services, Chinese Medicine's treatment and recreational activities, etc. to cater for the physical, psychological, social and spiritual needs of the patients.

了解更多
For details



服務 · 在此

Anti-Cancer We Care

人情味 · 也在此



駐院醫生及
註冊護士護理
Resident Doctors
& Nursing Care



駐院中醫服務
Traditional
Chinese Medicine



物理治療
及復康服務
Physiotherapy &
Rehabilitation Service



足病診療
Podiatry Services



駐院藥劑師
及藥房
Pharmacy Service



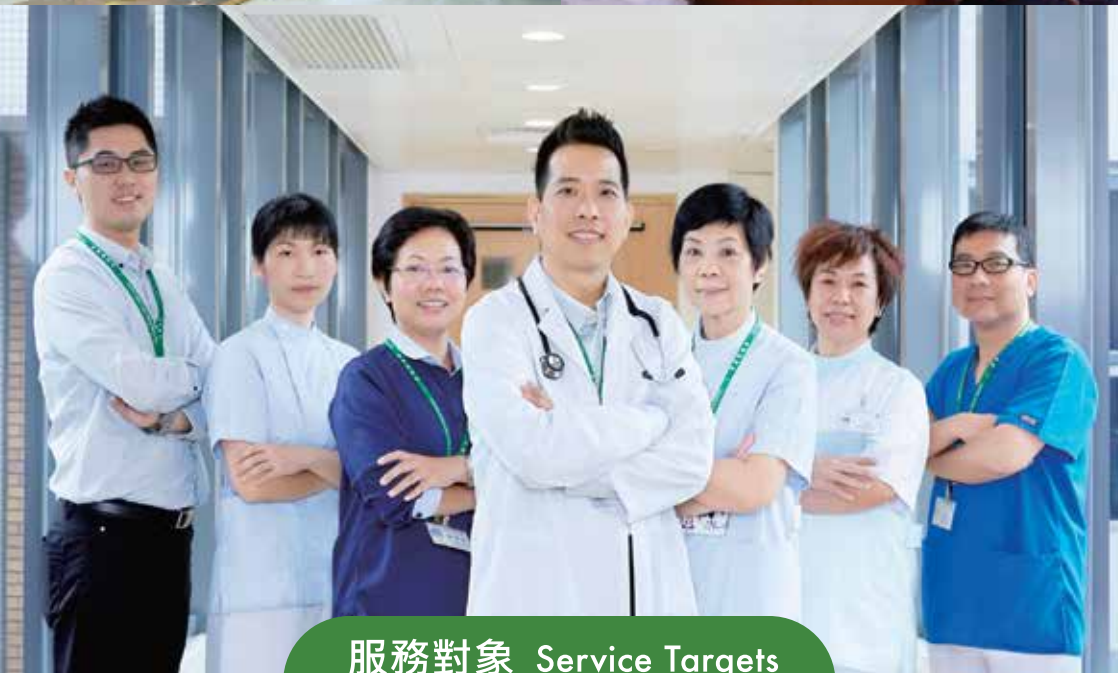
註冊營養師
諮詢服務
Dietitian Guidance



心靈關顧
及康樂活動
Emotional Counselling
& Recreational Activities



言語治療
Speech Therapy



服務對象 Service Targets

中心的服務適合年滿18歲，並有以下需要的人：

Our Service Suits Adults Aged 18 or Above with the Following Needs:



需要長期或短期護理照顧的病患者
Long-term or Respite Nursing Care



正接受康復治療的癌症、中風或腦部受損等病人
Rehabilitation Care for Patients with Cancer, Stroke, or Brain Injury, etc



舒緩護理及寧養服務的晚期癌症或非癌症病患者
Palliative and End of Life Care for Cancer or Other Patients



房間收費 Accommodation Charges		月計 (港幣\$) Monthly Charges (HK\$)
2或3人房	2 or 3-Bedded Room	\$27,000 – \$43,900
標準單人房	Standard Single Room	\$51,800 – \$56,800
特大單人房	Large Single Room	\$60,500
豪華單人房	Deluxe Single Room	\$85,500

*入住本中心的費用包括：新症綜合評估（一次性費用\$2,000）、房間收費、護理收費、自攜藥物行政收費，以及定額雜項收費計劃（每日\$490）。Service Charges Include: Integrated Admission Assessment (One-off \$2,000), Accommodation Charge, Nursing Care Charge, Administration of Private Drugs and Fixed Fee Package on Miscellaneous (\$490 per Day).

*每個房間設有洗手間、雪櫃、免費Wi-Fi及獨立電視。Each Room is Equipped with Toilet, Refrigerator, Free Wi-Fi and Independent TV.

*以上資料如有任何更改，恕不另行通知。This Information is Subject to Change without any Prior Notice.

院友心聲 Testimonial



充滿愛及關心的環境

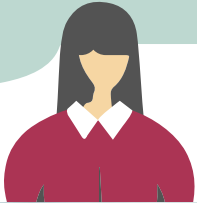
May

專業照顧及親切關懷
張小姐

細心呵護，
無微不至

Ray

悉心護理
陳太



護理服務及程度
Nursing Care and Dependency Levels

月計 (港幣\$)
Monthly Charges (HK\$)

輕度 Low

\$3,380

高度 High

\$6,210

加護 Extensive

\$7,600

以上收費包括 Charges Include,

駐院醫生巡房 (每星期一次) Resident Doctor's Ward Round (Once per Week)

基本護理 General Nursing Care

膳食 (早、午、晚餐) Meals (Breakfast, Lunch and Dinner)

康樂活動 Recreational Activities

情緒及靈性輔導 Emotional & Spiritual Counselling

交通指南 Transportation

免費穿梭小巴 Free Shuttle Bus



公共交通工具 Public Transportation



48、71、72A、75、78、97A、107



南港島綫黃竹坑站B出口，步行約15-20分鐘可到達本院

Take Exit B of Wong Chuk Hang Station on South Island Line,
Walk for about 15-20 minutes to JCCRC.



設訪客時租車位

Car Park is Available. Parking Fee on Hourly Basis.

入住申請 Admission



遞交醫生轉介表
Complete Doctor's
Referral Form



約見家屬及參觀院舍
Arrange a Visit



安排入院
Arrange Admission

查詢及預約 Enquiry and Appointment

🏠 香港黃竹坑南朗山道30號 📞 3921 3888 🌐 jccrc.org.hk
30 Nam Long Shan Road, Wong Chuk Hang, Hong Kong